

Business Analytics

Your profits are measured in data, **not cash**. Grow at a rapid pace using insights from your current business data.

Bilander provides the know-how and tools. Discover new product opportunities, build customer loyalty, develop up-sell and x-sell.

Too much data to manage?

Number of Projects 20

Internal transactions (monthly) 50

Number of hours Spent on reporting (monthly) 160

TAILORED TO YOUR NEEDS

Use an analytical platform that is friendly to business users. Run advanced analyses without the need for IT assistance. Examples: current return on investment, projected margin, contracts analysis, dynamics of the project / chosen company / the entire enterprise.

DEVELOPMENT BUDGET

Instantly analyze summarized information: the plan vs the implementation of development work expenditures. Of course, you can budget in multiple currencies.

COST MONITORING

Analyze at any level - from all investments down to a single invoice. Details are always available within a few clicks.

BUDGET SUMMARY

Work briskly with a toolset that automatically updates all the data and reports. End the era of manually merging and analyzing countless Excel files.

RENT ROLL

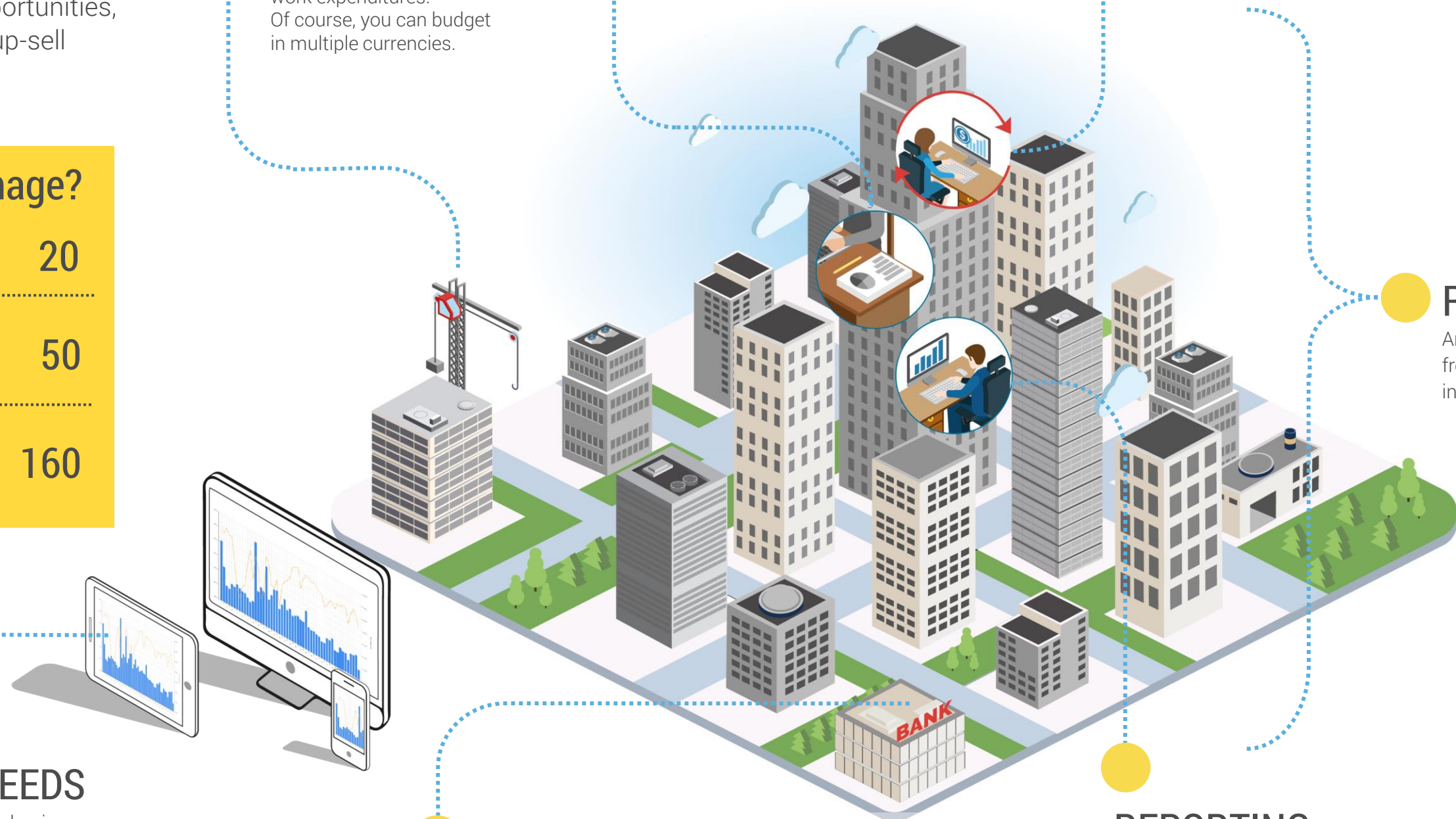
Analyze planned income from all your projects in one place.

DEBT SERVICE

Save countless hours by using a tool that automatically calculates values associated with commercial loans and loans between companies. You can define any attributes to be monitored (tranches, interest, amortisation, swaps, etc.).

REPORTING

View current results for all projects. All data is in a single location. Information is automatically updated (no need to manually create reports).



ALL DATA IN ONE SPOT



Binocle is a complete solution for data integration, reporting & analysis. It's one of the most versatile platforms of its kind.

Gain **insights from data within minutes** (production, sales, customers, revenues, costs, product portfolio etc.).

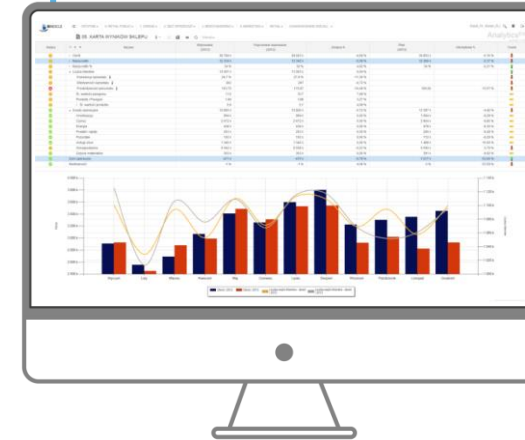
ANNUAL BUDGET - FORECASTING



Save time! Binocle works 24/7:

- **Automatic result forecasting**, P&L, balance sheet and cash flow.
- **Automatic calculation** of planned income and operating / financial costs.

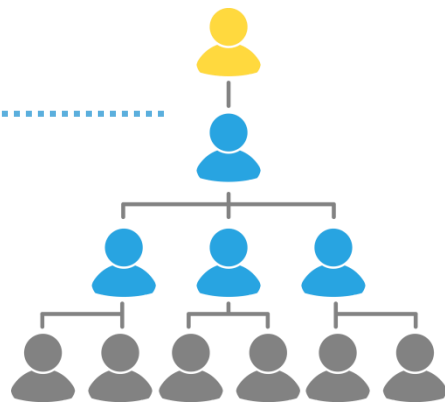
CURRENT BUDGET SUMMARY



Always up to date:

- **Compare** your plan, forecast and performance in one place.
- Utilize **automatic calculation** of profitability indicators (EBITDA, EBIT, gross and net result, etc.).

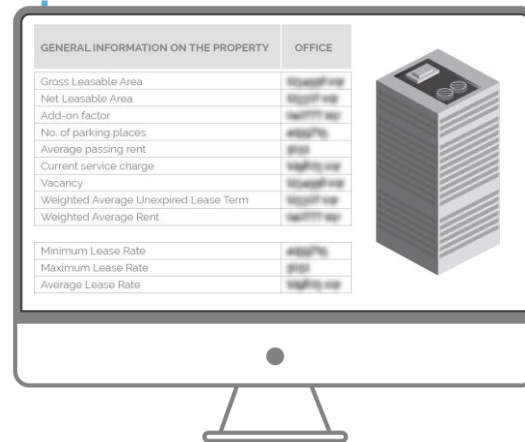
CONSOLIDATION



Consolidate results for capital groups. Streamline your work with the automatic consolidation of financial statements.

Export presentations (automatically updated!) with a single click – for the Board, Shareholders, Auditors and Authorities.

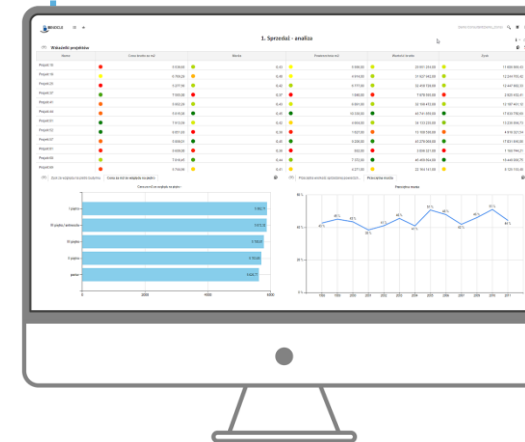
INVESTOR RELATIONS



Create **investment committee presentations** with just a few clicks. Reports are automatically updated with graphic layout according to your corporate graphic identity.

Schedule the **automatic creation & distribution** of pre-sentations (for each investor).

REPORTING



Monitor data from any angle (companies, divisions, time, branches etc.).

Analyze & compare the financial results of the organization from multiple angles (time, value of revenues, cost types etc.) within just a few clicks.

REPORTS ALWAYS UP-TO-DATE



Binocle **updates all dashboards automatically**. Your reports are based on the most recent data. Produce and analyze **historical snapshots** (any time period, any range of data).

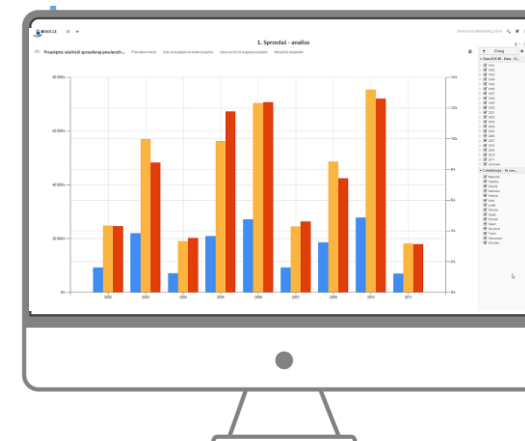
RENT ROLL



A complete model of planned settlements - analyze current contract data (type/space area, currencies, units of settlement, rates, terms, fees, etc.).

Automatic billing switch - according to current needs (new customers, extended and negotiated agreements, etc.).

INVESTMENTS



Analyze & compare:

- **Return on investment.**
- **Forecasted** income. Plan even 15 years ahead, automatically include contract renewals.
- **Actual income.** Take into account current contracts and those to be signed (advanced stage of negotiations).